

- FAST ENQUIRY RESPONSE
- EXTENSIVE UK STOCKHOLDING
- ON-TIME DELIVERY
- EXCELLENT CUSTOMER SUPPORT

0161 231 9140

info@hambakerpipelines.co.uk



Hambaker

PIPELINES

With us you
benefit from:

- Fast response to customer requests for price and delivery
- Extensive stocks across the range of products
- For in-stock items a next day delivery service is available
- Credit card payments accepted
- Weekly scheduled UK deliveries

Sales and Technical Support

Scotland & North England T: 0161 231 9143

Wales & Midlands T: 0161 231 9145

SW England T: 0161 231 9142

SE England T: 0161 231 9144

N. Ireland & R.O Ireland T: 0161 231 9147

Head Office

Hambaker Pipelines
18 Whitworth Street
Openshaw
Manchester
M11 2NJ
Tel: 0161 231 9140
Fax: 0161 231 9192

info@hambakerpipelines.co.uk
www.hambakerpipelines.co.uk



Fabricated Pipes and Steel Fabrications



We are one of the very few Pipe Fabricators still producing product here in the UK and as such this forms a major part of our business together with the production of Steel Fabrications. Our full service which we believe to be unique includes:

- Full design capability
- Fabricating
- Finishing
- 100% quality testing
- EN545 and EN598 Approved
- Pipe size range from 80mm - 2000mm



Product Bundling Service

On-site solutions for M&E Contractors

Because we carry extensive stocks of large ranges of products dedicated to the Water Industry we are ideally placed to offer a Product Bundling Service delivered direct to site. Everything from one supplier. Even if you think we might not carry a particular product, call us and ask and if we haven't got it we can probably get it.

We are proud of our track record

98.7%

OF ALL ORDERS ARE DELIVERED ON-TIME, IN FULL AND ERROR FREE, so you can rely upon us to deliver.



Make your first call to us for all your on-site needs, because **with Hambaker Pipelines you've got it made - and delivered.**

Fabricated Pipes

Steel Fabrications

Finishing

DESIGN
FABRICATION
COATING
QUALITY TESTING



Fabricated Pipes

- Manufactured at UK Site
- 100% quality tested
- EN545 and EN598 approved
- Fabricated pipe sizes from 80mm - 2000mm
- BSP Boss service available
- Drilled flanges to PN10, PN16, PN25 and PN40

Steel Fabrication Services

- Bespoke steel fittings to ductile iron dimensions
- Coated to BS EN545 / 598
- Scotchkote 206N service available
- On-site service for bespoke items
- Specialist manifolds manufactured



Special Linings and Coatings

- TT range diameter DN80mm to DN2000mm
- Scotchkote 206N available
- Plascoat PPA available
- WRAS and DWI approved coatings



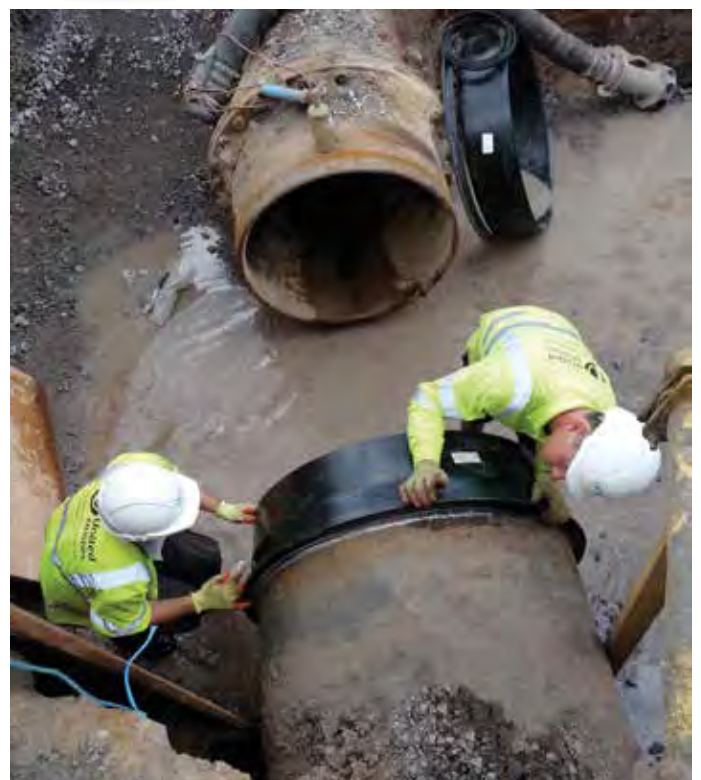
Couplings and Adaptors



We are continuing to develop our long association with Viking Johnson. Their market leading products are specified by name throughout the Water Industry and their commitment to continuous improvement of Design, Quality and Safety makes Viking Johnson a great fit for our business ethos and our customer needs.

Our firm commitment to carrying the full range of Viking Johnson products in stock, positions Hambaker Pipelines as one of the leading stockists and distributors in the UK.

- Universal couplings and flange adaptors 2"-12"
- Dedicated couplings and flange adaptors above 12"
- End restraint couplings and adaptors for P.E. & Ductile Iron
- Bespoke services for couplings and adaptors up to 2000mm
- Wall couplings
- Dismantling joints



Ductile Iron Pipes and Fittings



- EN545 from 80mm - 2000mm
- EN598 from 80mm - 2000mm
- Fittings with flange and socket configurations
- A range of further specialised pipe coatings available
- Bespoke Anchored systems available
- Extensive stocks centrally located in the UK

Penstocks and Stop Logs



- UK manufactured
- Variety of materials; stainless steel, cast iron and HDPE
- Wide range available in any variant up to 4000mm
- Gearbox and actuation services available
- On site survey, design, installation and commissioning services available

Valves



- Gate valves from 50mm – 2000mm
- Butterfly valves from 50mm – 2000mm
- Non return valves
- Air valves - water and sewage
- Fire Hydrants
- Spindles and T keys
- Gearbox and actuator services available
- On site survey, design, installation and commissioning services available

Under Pressure Tees, Repair Clamps and Service Saddles



- Lightweight and easy to install
- Manufactured entirely from stainless steel
- Clamps can be applied to ductile iron, cast iron, steel, AC and PVC pipes
- Clamps can be manufactured to facilitate any pipe size
- Available with boss or flanged outlet
- Saddles suitable for ductile, steel and AC pipes with female threaded outlets 1" to 1.5"



Fire Main Applications

- Process and Blutop System depending on application
- FM approval tested to 15-30 bar and carrying the FM Kitemark
- Process range is coated black for identification purposes against potable and sewer water systems
- SG PAM Rapid socket design for ease of installation
- Suitable for over 90% of all soil conditions in the UK
- 100 year expected lifetime
- Size range DN 100 - 400
- Restrained and unrestrained systems
- Complete systems including Hydrants and Valves, both UK and American style to FM/UL specifications
- Suitable applications include Airport raw water systems, Power Stations, Manufacturing Plants and Warehousing

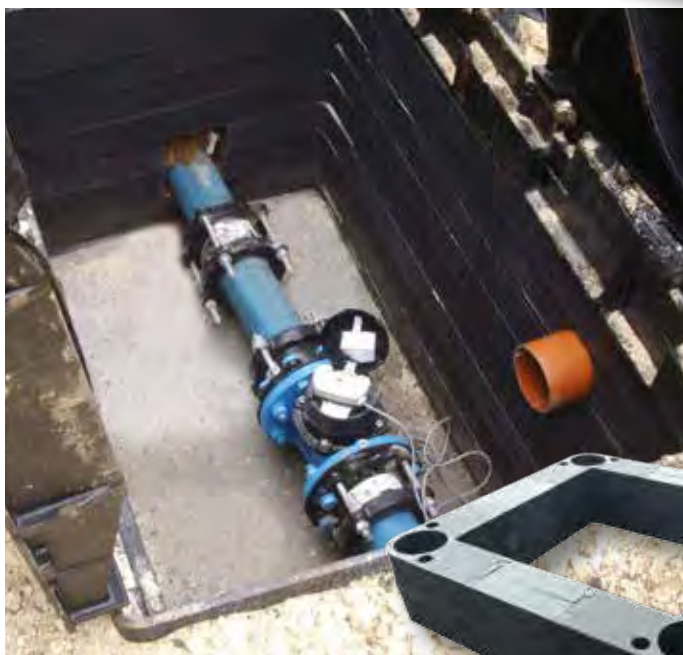
Access Covers and Gratings

- D400 and B125 Access Covers
- D400 Gratings
- Quality assured ISO9001
- Compliant and kitemarked to the requirements of EN124
- Comprehensive range available from stock
- Downloadable product and installation datasheets
- HB Rapid bedding mortar
- HB Rapid+ pothole repair kit



Composite Chambers

- 100% recycled plastic
- UK manufactured
- Structural design - no concrete surround required
- Far lighter than traditional concrete
- Reduced H&S implications for site personnel
- Extensively used by water utilities across the UK
- Reduced costs and installation times
- Pre-drilled duct entries available
- Significantly less breakage vs concrete
- Available in all standard sizes and depths



Outside Diameter Conversion Chart



...with Hambaker Pipelines you've got it made - and delivered.

Nominal Size	mm		in		mm		in		mm		in		mm		in		mm		in			
	15	20	25	30	40	50	60	70	80	90	100	125	150	175	200	225	250	275	300	350		
Metric Cast Iron & Abrasion Cement (Turned End)	BS 78 1981 Class ABCD	BS1211 (UT27" AB only NB)	220	272	324	376	430	480	530	586	636	690	740	790	840	890	940	990	1040	1090	1140	
			56.9	69.1	82.3	95.5	121.9	149.9	177.3	204.7	232.2	259.1	286.0	333.6	386.6	433.0	482.3	545.1	571.5	597.9	650.2	702.8
Metric Cast Iron & Abrasion Cement (Turned End)	BS 76 1996 Class CD only	Non- Standard	220	272	324	376	430	480	530	586	636	690	740	790	840	890	940	990	1040	1090	1140	
			56.9	69.1	82.3	95.5	121.9	149.9	177.3	204.7	232.2	259.1	286.0	333.6	386.6	433.0	482.3	545.1	571.5	597.9	650.2	702.8
Standard Outside Diameter (O.D.)	Series 1 ISO420 Series 2 Series 3	Series 2 Series 3	21.3	26.9	33.7	42.4	48.3	60.3	76.1	88.9	101.6	114.3	139.7	168.3	193.7	219.1	244.5	273	323.9	355.6	406.4	457
			25.4	30	44.5	54	73	82.5	108	141.3	159	183.7	244.5	152.4	177.8	193.7	219.1	244.5	273	323.9	355.6	406.4
Steel	BS 534	API SL & BS 1600 (UT 36" NB)	21.3	26.9	33.7	42.4	48.3	60.3	76.1	88.9	101.6	114.3	139.7	168.3	193.7	219.1	244.5	273	323.9	355.6	406.4	457
			25.4	30	44.5	54	73	82.5	108	141.3	159	183.7	244.5	152.4	177.8	193.7	219.1	244.5	273	323.9	355.6	406.4
uPVC	BS 3505	BS 3506	21.3	26.9	33.7	42.4	48.3	60.3	76.1	88.9	101.6	114.3	140.2	168.3	193.7	219.1	244.5	273	323.9	355.6	406.4	457
			25.4	30	44.5	54	73	82.5	108	141.3	159	183.7	244.5	152.4	177.8	193.7	219.1	244.5	273	323.9	355.6	406.4
Ductile Iron	BS 4772 DIN 28801, 28802 28803, 28805	56 DN 66 DN 82 DN 28801 28803 28805	222	274	326	378	430	482	534	586	638	690	742	794	846	898	950	1002	1054	1106	1158	
			56.9	69.1	82.3	95.5	121.9	149.9	177.3	204.7	232.2	259.1	286.0	333.6	386.6	433.0	482.3	545.1	571.5	597.9	650.2	702.8
GRP	BS 485 1981 Class 20 Class 25	Metric BS 5556 56/161/1	220	272	324	376	427	478	530	582	633	684	735	786	837	888	939	990	1041	1092	1143	
			56.9	69.1	82.3	95.5	108	121.9	140.2	168.3	193.7	219.1	244.5	273	323.9	355.6	406.4	457	508	559	610	660
Metric Abrasion Cement (Turned End)	BS 485 1981 Class 20 Class 25	Metric BS 5556 56/161/1	220	272	324	376	427	478	530	582	633	684	735	786	837	888	939	990	1041	1092	1143	
			56.9	69.1	82.3	95.5	108	121.9	140.2	168.3	193.7	219.1	244.5	273	323.9	355.6	406.4	457	508	559	610	660

Metric uPVC & PE have a designated nominal bore, which is usually the same as the outside diameter. Quote pipe class, rating or wall thickness on enquiry.